

Access the VDI Environment

To start up the VDI environment after you, install the Horizon client.

Open your browser and go to <https://vdi.sunypoly.edu>.

Select the Omni Horizon Web Client.

There is an option to always use the Omni client. Click that box will allow the end user to bypass that screen and go directly to the login screen.



You will be presented with the standard screen that you are used to.

Enter your Campus email address and your

Complete the MFA steps if prompted.

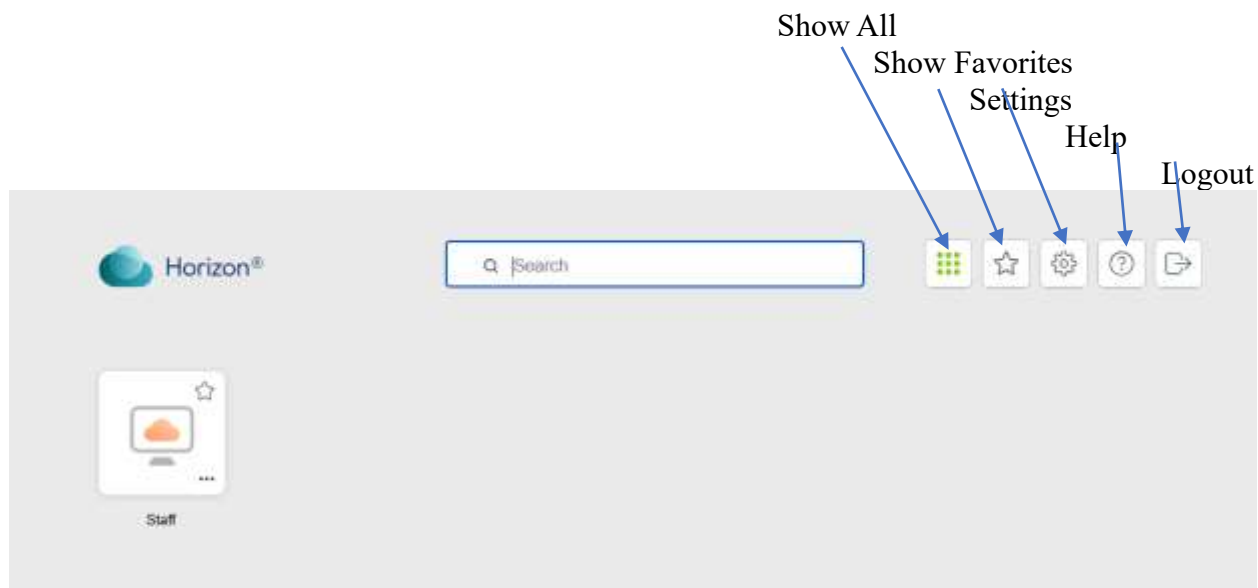


Microsoft login

Banner Password.

Enter your login information again on this screen three bad attempts you will be locked out FOR 30 minutes.

You will be presented with the Virtual desktop that has been assigned to you.



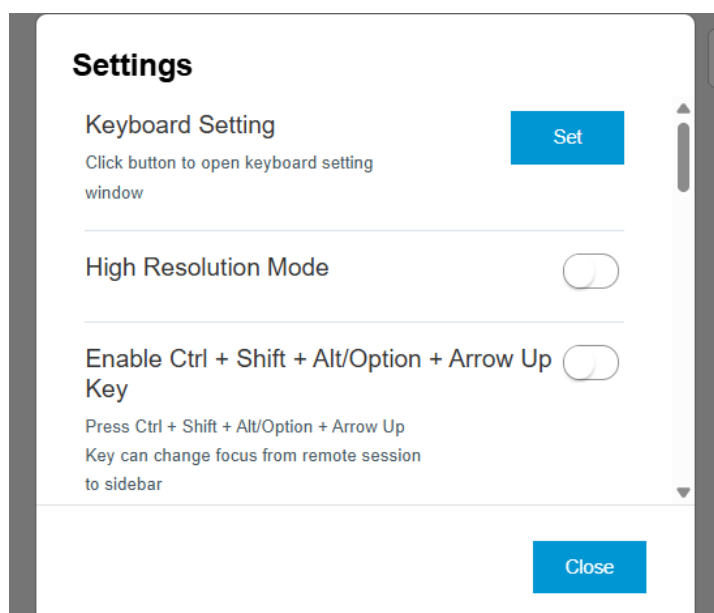
Show all will display all desktops that you are assigned.

Show Favorites – allows you to just show the desktops that you have marked as favorites.

Help -takes you to the SUNY poly ticket system, where you can login and create a support ticket.

Logout - logs you out of the VDI desktop application.

Settings



Settings

Share your location

This will allow applications inside of your remote session to use your location.



Do not show geo permission dialog when connecting to a desktop or application.



Enable Media Optimization for Microsoft Teams



Microsoft Teams must be relaunched for this change to take effect.

Close

Settings

Enable screen sharing for Microsoft Teams virtualization



Microsoft Teams must be relaunched for this change to take effect.

Enable Folder Sharing

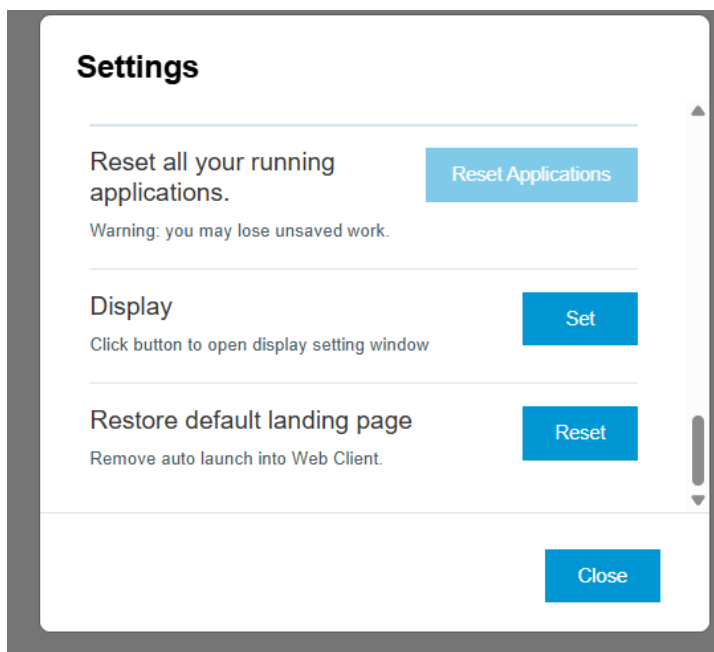
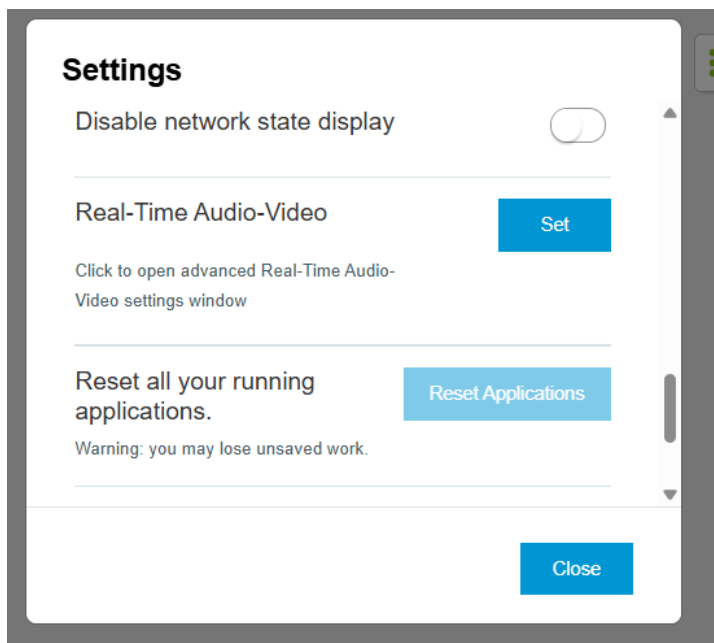


Select

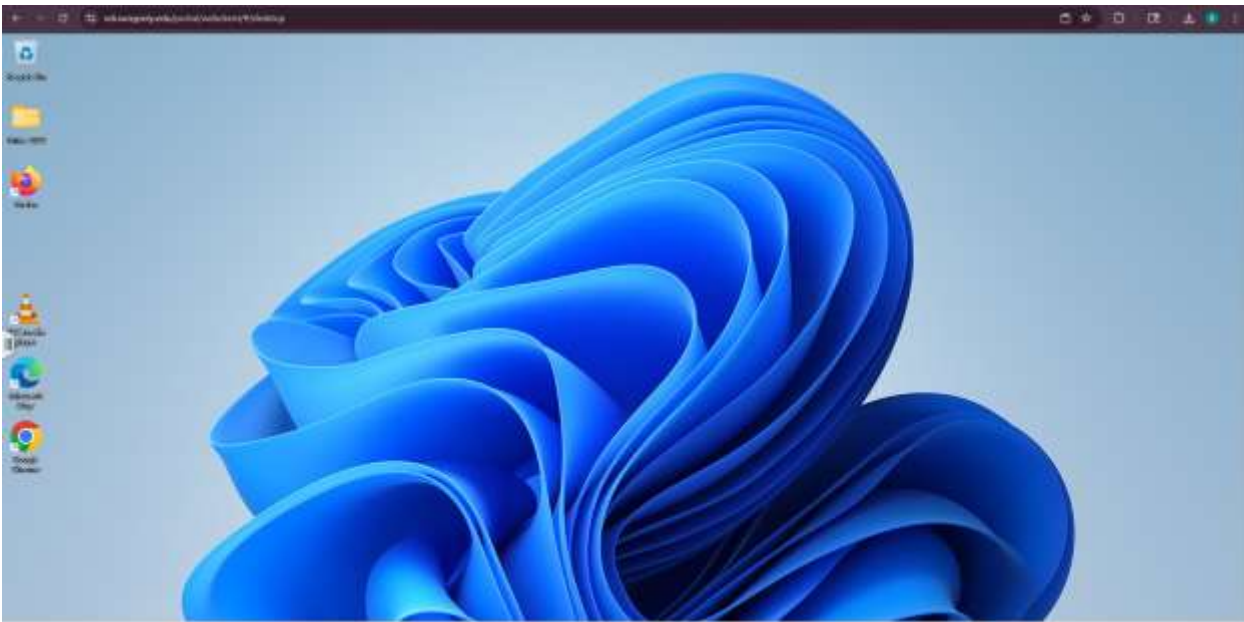
Set Time Zone Automatically



Close



A desktop similar to the screen below will be displayed



The software installed includes but is not limited to:

MS Office Products

Chrome, Firefox and MS Edge

Notepad

Putty

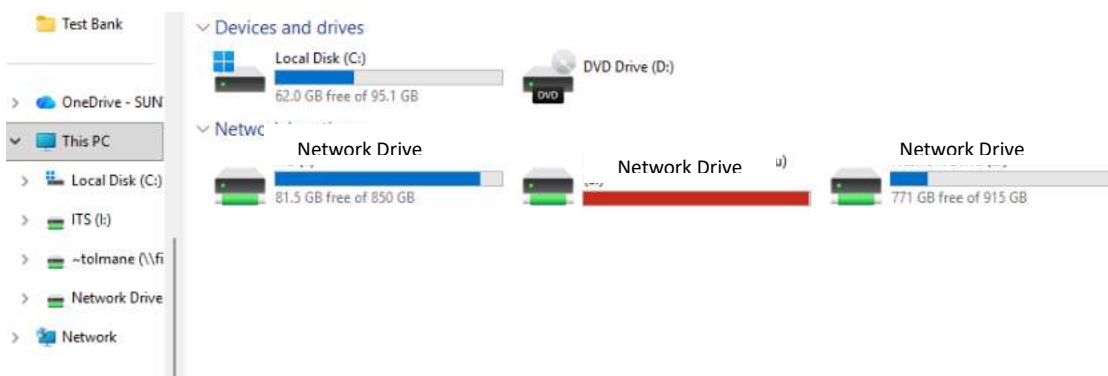
VLC Media player

Similar to using a campus computer, when you sign into the VDI environment a profile is created for you.

You will be able to access both Native banner and Argos from your browser from within the VDI environment.

You can save your favorites as well as customize your taskbar so that you have the same visual experience each time you log in.

Your personal folder as well any network folders should automatically map for you



You cannot save files to your personal computer

Printers available will include any personal printer you have attached to your personal pc along with the new campus print queue.