



COVID-19 ITS Licensing Status and Allocation

Description: During the events of the COVID-19 Pandemic, we are working on getting software available for students to be able to use and work from home. This page will be subject to change as we get more information on software, add software or modify the processes in downloading and licensing software.

Thank you on behalf of the ITS Team!

Contents

Adobe CC:.....	2
AutoDesk:.....	2
Bentley:.....	2
ESRI ArcGis Desktop/Pro:.....	2
Geomagic:	3
LabView / Multisim:.....	3
Maple:.....	12
Mastercam:.....	13
Mathematica:.....	13
MatLab:.....	14
Microsoft Office:.....	14
Minitab:.....	14
NVIVO:.....	15
SAP 2000:.....	15
Solidworks:.....	17
SPSS v26.....	17
VisualAnalysis EDU:.....	17

Adobe CC:

We are no longer being provided free licensing from Adobe in regards to use at home. We do however have discounted subscriptions to the Creative Cloud via our OnTheHub site:

[SUNY Polytechnic On the Hub](#)



AutoDesk:

Free COVID-19 Response for distance learning:


[AutoDesk Education Offers](#)



Bentley:

NOTE: We will be providing an update for this article in the next week or two (8/31/2020)

We have Bentley software available through the professors teaching the course and if your professor is unable to assist please contact the Helpdesk via our ticket system: <https://helpdesk.sunypoly.edu/>



ESRI ArcGis Desktop/Pro:

ESRI Official COVID Response so far:

[Request GIS Assistance](#)

Software/Data Request:

<https://www.esri.com/en-us/disaster-response/request-assistance>



Geomagic:

Download from:

[Download 3D Systems Software](#)

For a license key please submit a ticket with us for Geomagic along with your course that requires this software at helpdesk@sunypoly.edu



LabView / Multisim:

- 1) Download from: <https://www.ni.com/en-us/landing/download-academic-software.html>

LabVIEW Academic Site License Installer

[Download Software Platform Bundle](#)

- 2) Select either the 32-bit or 64-bit editions:



Software Platform Bundle

The Software Platform Bundle provides the full NI software portfolio in a single package to build any application.

[+ Read More](#)

DOWNLOADS

Supported OS [?]	Windows	View Readme
Version [?]	<input type="text" value="Fall 2019"/>	
Application Bitness [?]	<input type="text" value="32-bit"/>	
Included Editions [?]	Professional	
Language [?]	<input type="text" value="English"/>	

Software Platform Bundle Fall 2019

Release Date
10/28/19

Included Versions
Fall 2019

- > [Supported OS](#)
- > [Language](#)
- > [Checksum](#)

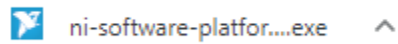
DOWNLOAD

File Size
5.37 MB

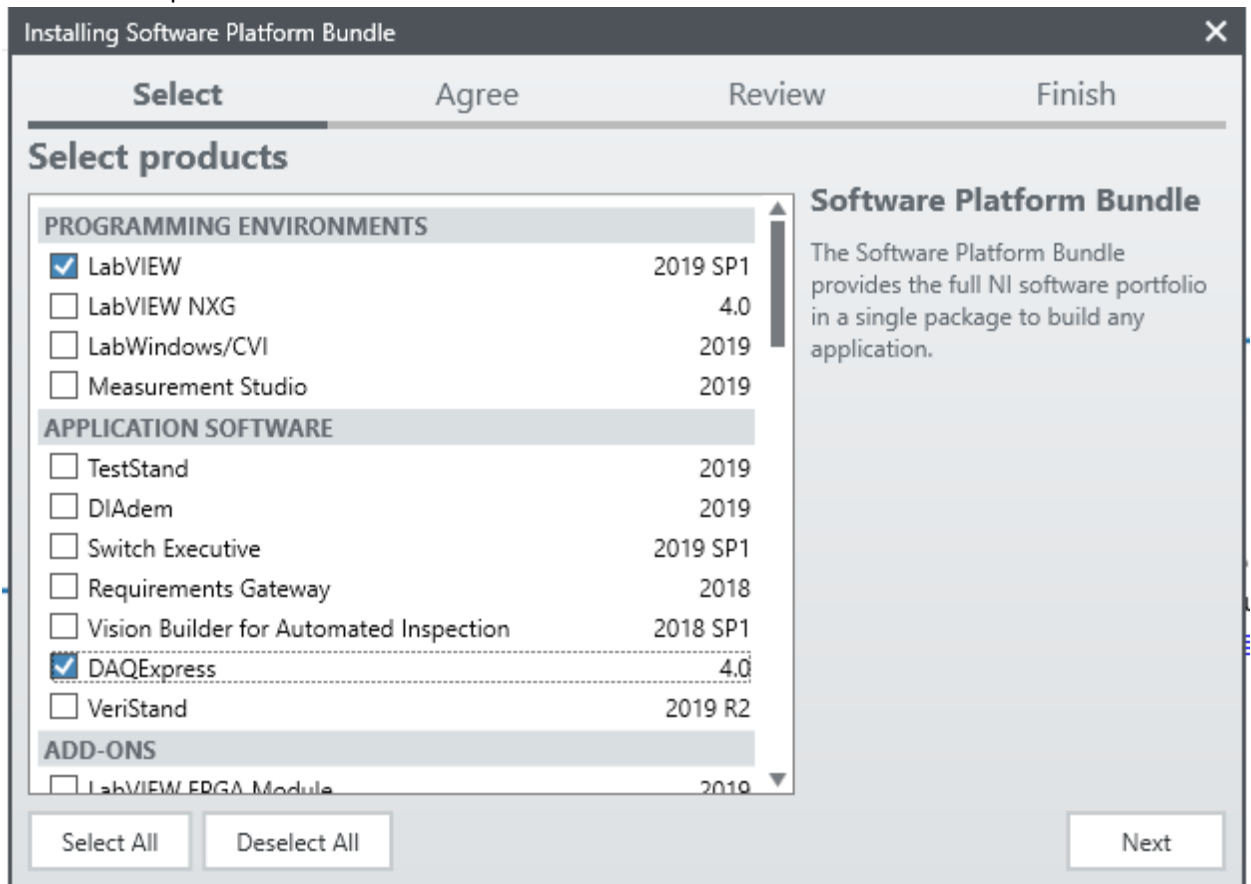
Note: If you need to download individual versions or patches, you can select from [Individual Offline Installers](#)

3) Then Click Download

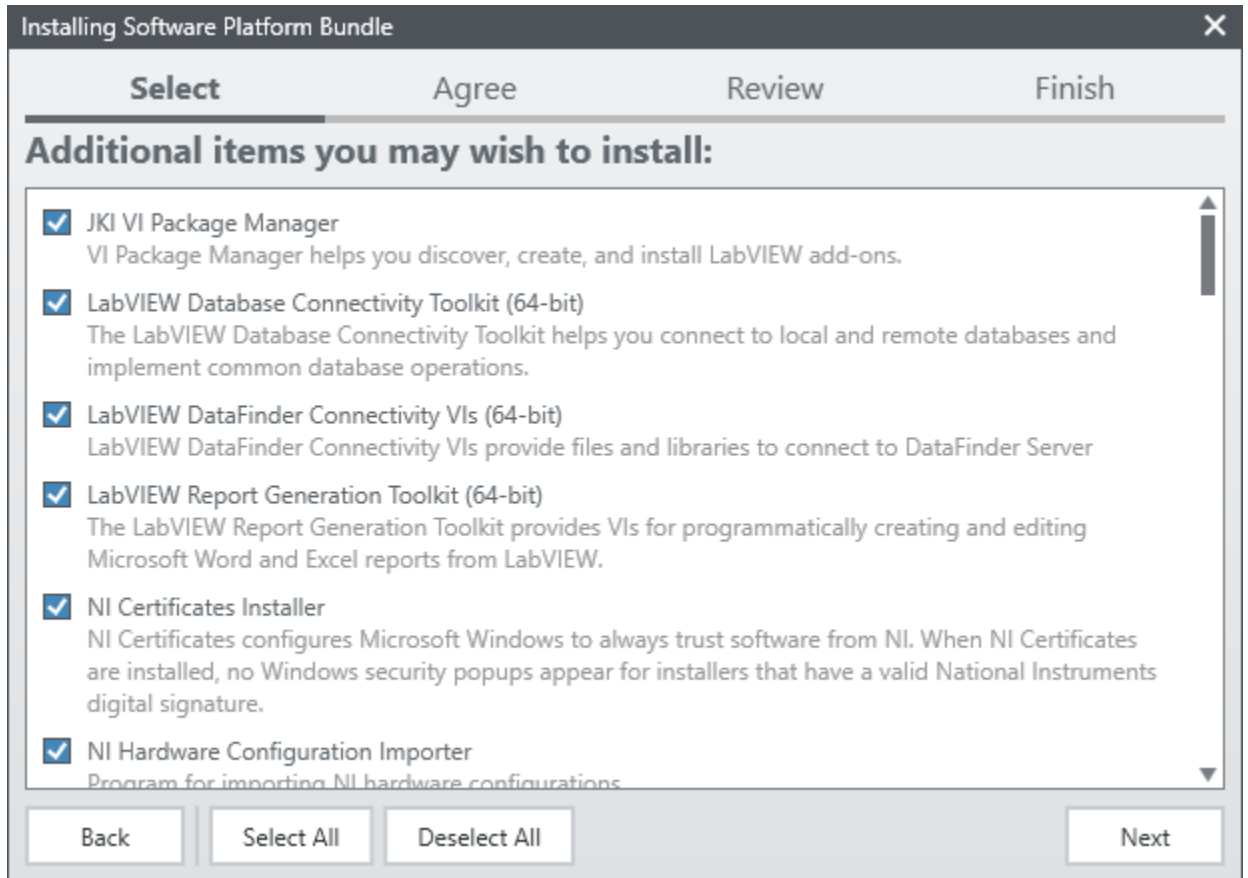
4) Launch the installer EXE:



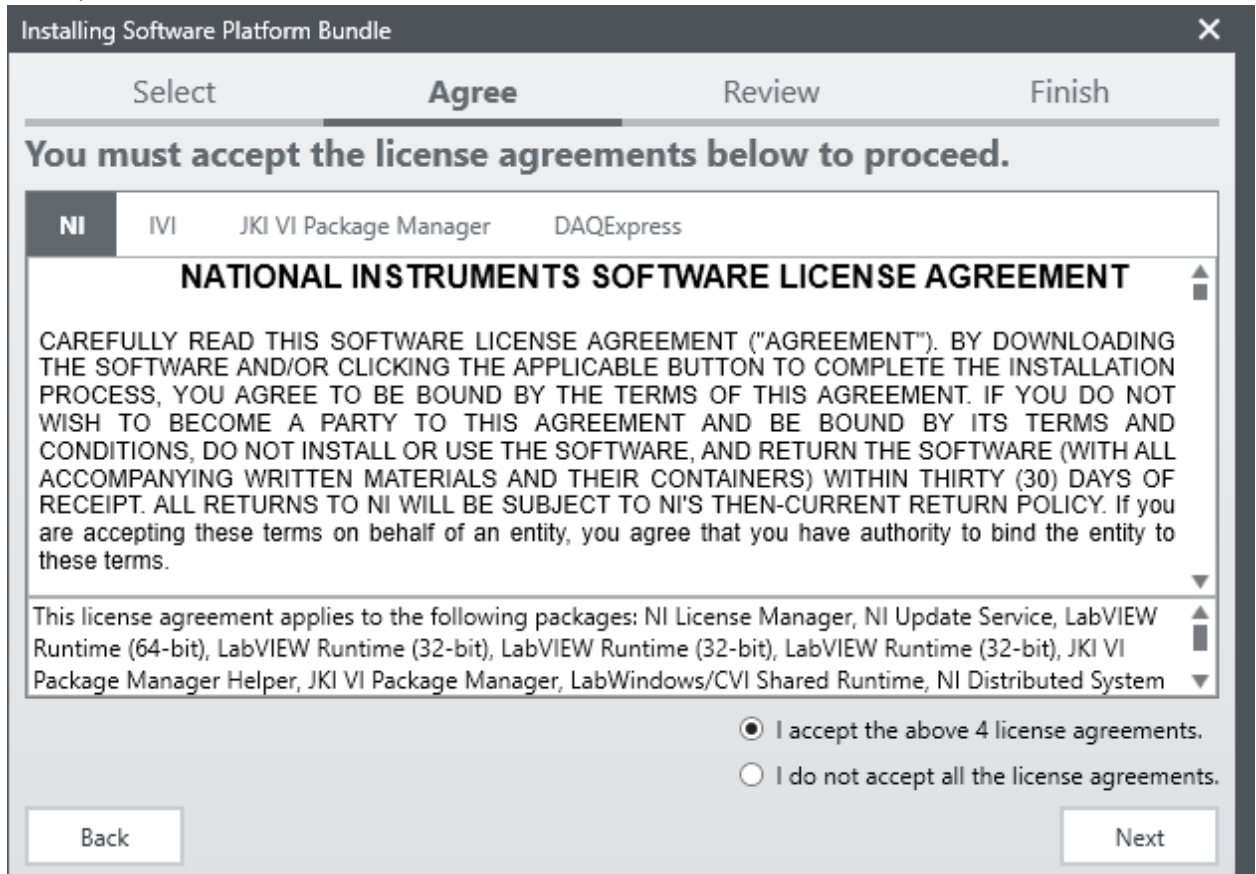
5) Check: DAQExpress



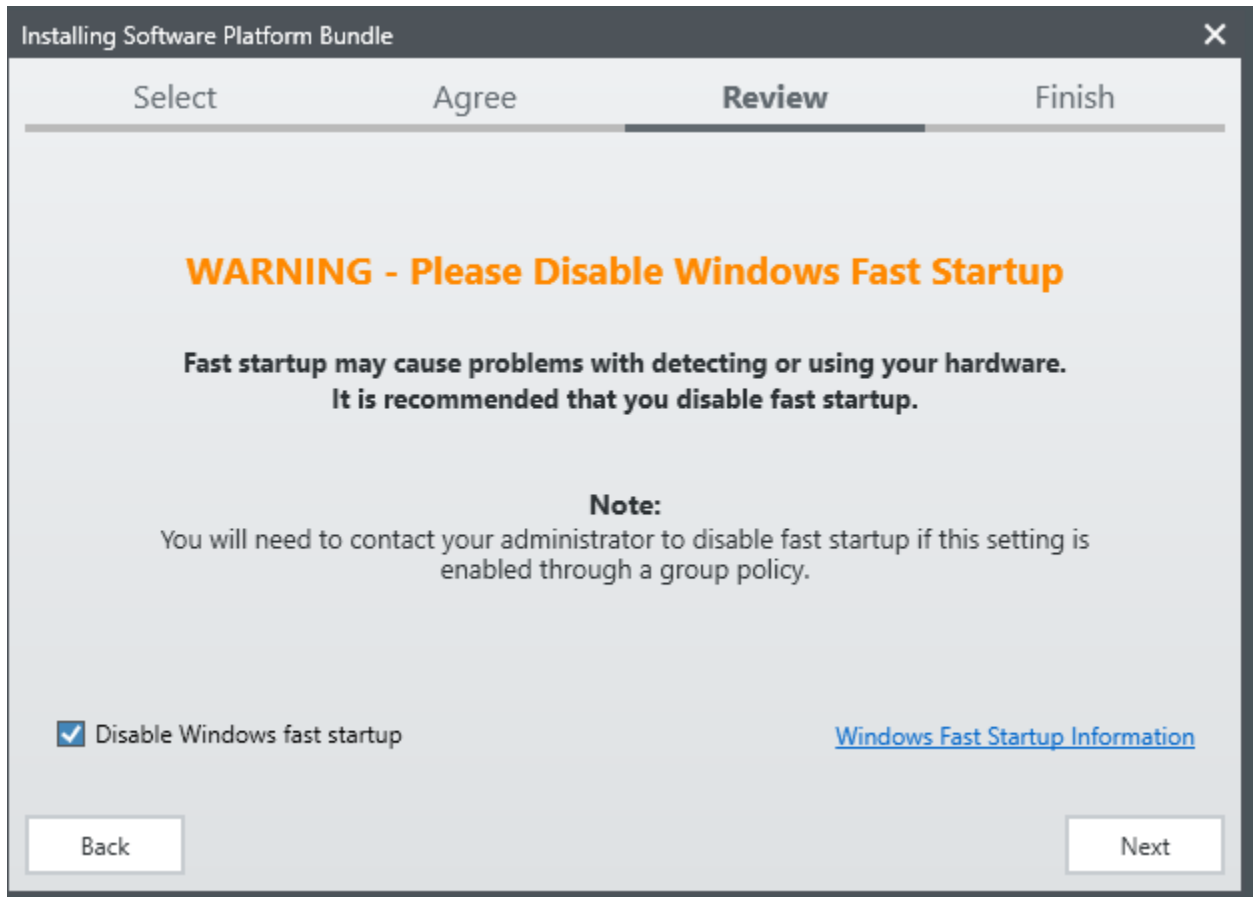
6) Click Next:



7) I Accept > Next:



8) It is recommended you disable Fast Startup for this software:



9) Review the Summary, then click Next:

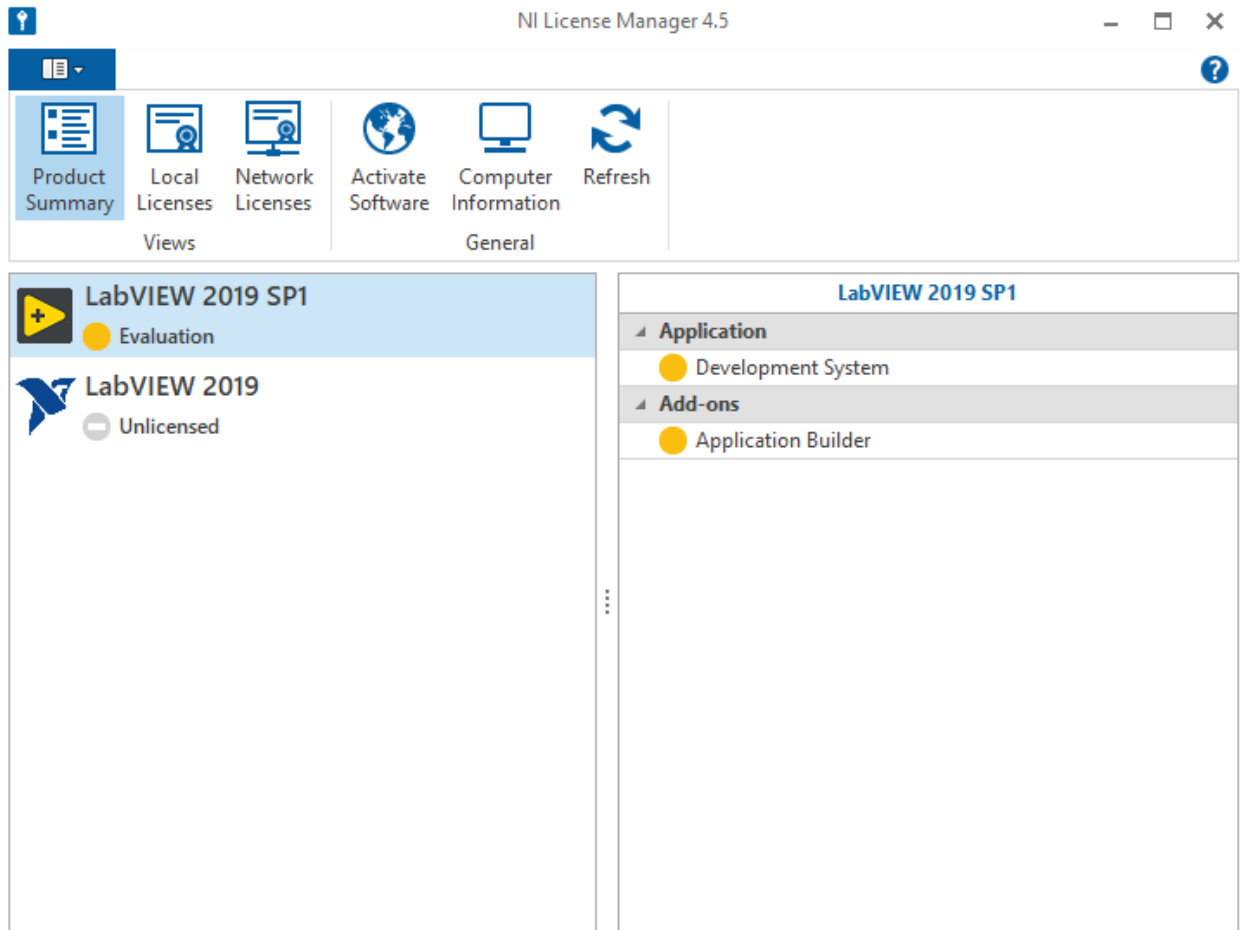
10) Once installation is successful please restart your machine.

11) You will now need to open NI License Manager

(Should be in the following locations based on the x86 or x64 installer used)

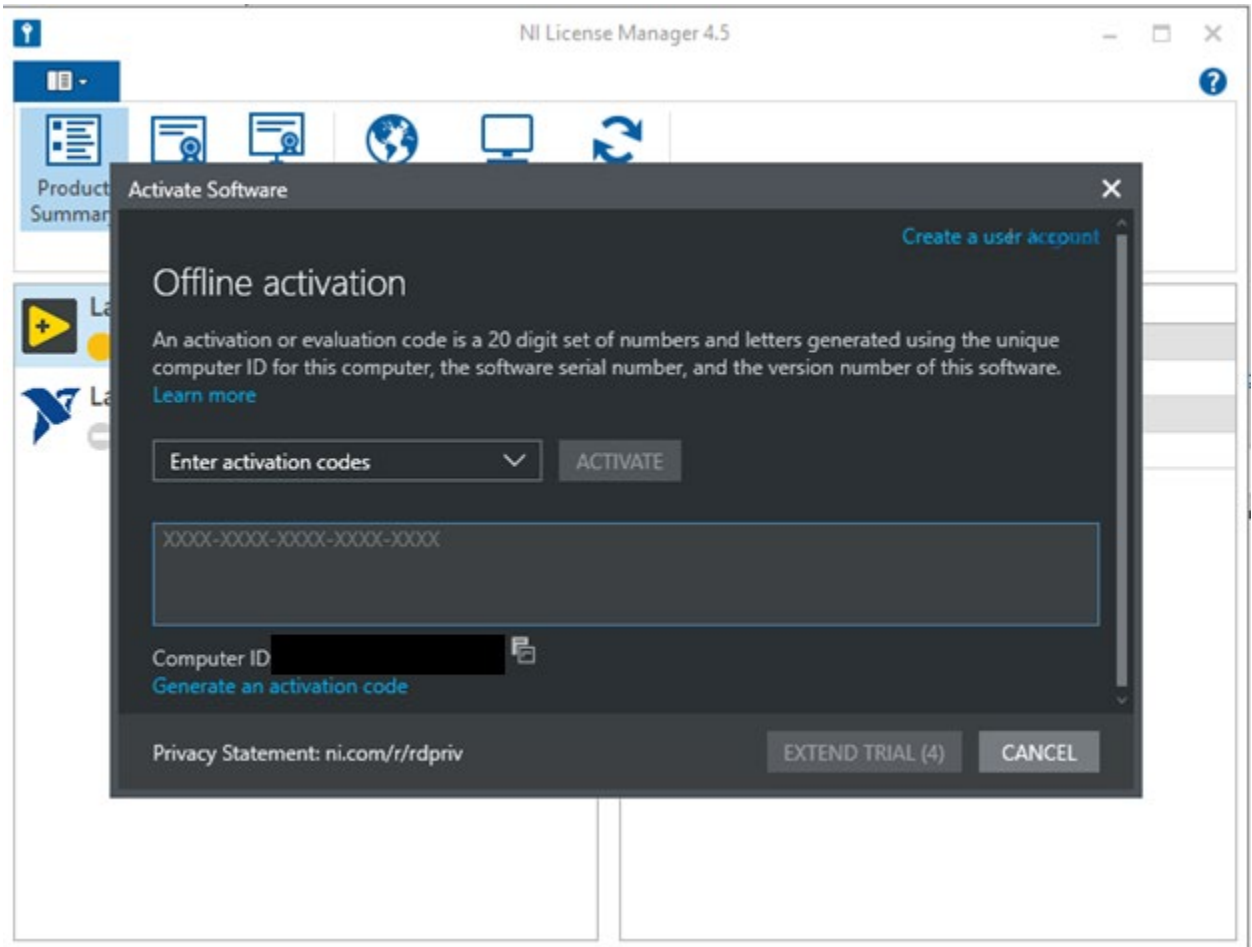
C:\Program Files (x86)\National Instruments\Shared\License Manager

C:\Program Files\National Instruments\Shared\License Manager



12) Once in the program, you will need to turn off your network adapter to initiate an “offline” activation. If you are on wifi, you can just turn off your wifi, if you are on wired you can disconnect the physical connection at this time.

13) Now Click on “Activate Software”



14) With this prompt now open, ***DO NOT CLOSE*** reconnect your internet connection.

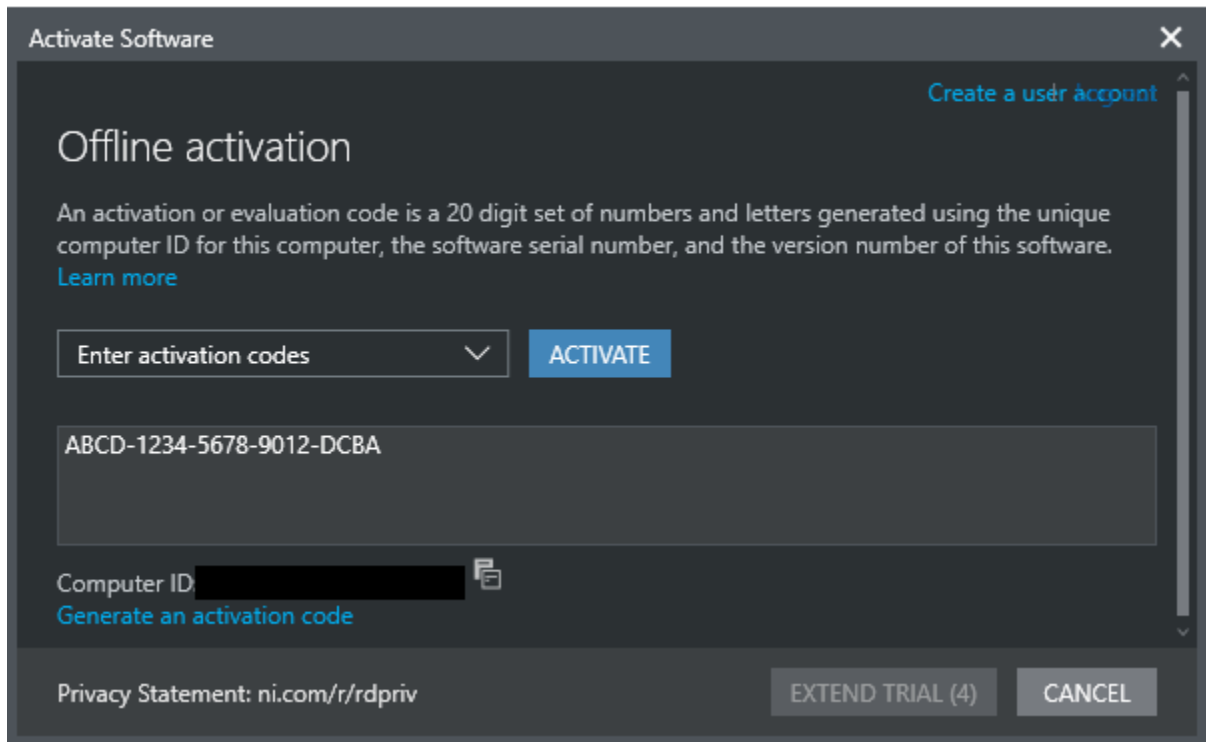
15) Now click the icon next to your Computer ID:



16) Then click “Generate an Activation Code”

17) Then click the “NI Product Activation” web portal link: http://delta.ni.com/nilg-activate/jsp/customer_activate_details.jsp

22) Now enter your activation code in and click Activate:



This should complete your setup for Labview at home and give you at home usage of the software. Please contact us via helpdesk@sunypoly.edu for license information or assistance with this product.

Thanks!



Maple:

To download:

[Download Maple Software](#)

Student License Code:

Please submit a ticket to helpdesk@sunypoly.edu to get a license code from us, thanks!



Mastercam:

For the time being we are advising using HLE version of Mastercam. Please follow the link and fill out the required form by Mastercam: <https://www.inhousesolutions.com/mastercam-2020-hle-download/>



Mathematica:

Request Access to Mathematica Online

1. If you haven't done so already, visit our [Wolfram User Portal](#) and create a WolframID (use your school email address).
2. Check your email to validate this request.
3. [Request your Mathematica Online log-in](#)
4. Check your email to validate.
5. To use Mathematica Online from....
 1. A laptop or computer, visit the [Wolfram Cloud](#) and log-in with your WolframID.
 2. A mobile device, download the free Wolfram Cloud app from your app store of choice and log-in using your WolframID.

Mathematica Online is available through August 15, 2020.

Mathematica Home-Use Licensing & Downloads

Faculty/staff

1. [Download Mathematica onto your personally-owned machine](#). Your campus's Mathematica license number is already populated in the link.
2. Complete the screens.
3. Please allow 1-2 business days for a note in your email concerning next steps.

Students

1. [Request an Activation Key](#)
2. Follow instructions in your email for downloading and activating.

MatLab:

To download navigate and sign in to get started (if you don't already have an account you will need to create one with your @sunypoly.edu email.

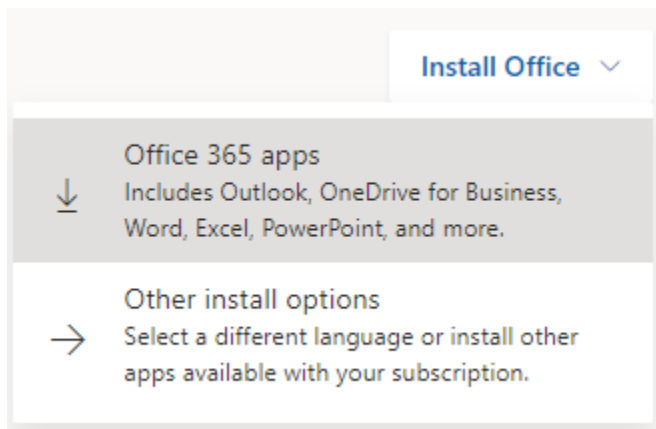
[SUNY Polytechnic MatLab Portal](#)

Microsoft Office:

To download Microsoft office please login to the following link:

<https://login.microsoftonline.com/>

Once logged in, the upper right corner should have the following to install your products:



Minitab:

Minitab 19:

[64-bit: 64-bit Minitab Installer for Windows](#)

[32-bit: 32-bit Minitab Installer for Windows](#)

Minitab Express 1.5.1 for Windows:

[Minitab Express Installer For Windows](#)

Minitab Express 1.5.2 for Mac:

[Minitab Express Installer for Mac](#)

License File:

Please submit a ticket to helpdesk@sunypoly.edu to get a license code from us, thanks!

 _____ 

NVIVO:

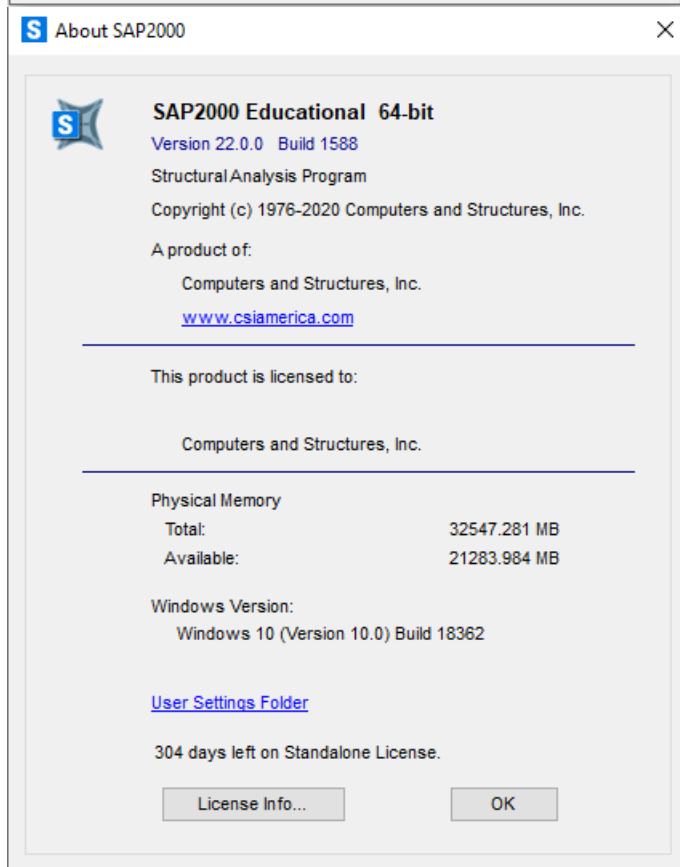
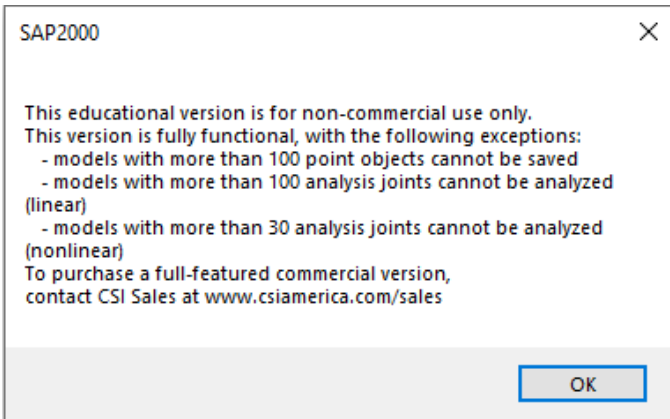
Please submit a helpdesk ticket by emailing us to acquire software: helpdesk@sunypoly.edu

 _____ 

SAP 2000:

COVID-19 Student Version:

<http://installs.csiamerica.com/software/SAP2000/22/SAP2000v2200StudentSetup.exe>



Solidworks:

We are given limited licenses for this, so please submit a helpdesk ticket to be provided with a temporary copy of Solidworks.

To submit a ticket, please email us at helpdesk@sunypoly.edu



SPSS v26

SPSS is now available at the following link:

[Download SPSS](#)

Students can submit a HelpDesk ticket to obtain an activation code.

To submit a ticket, please email us at helpdesk@sunypoly.edu



VisualAnalysis EDU:

This software is free when signing up with an EDU account:

<https://www.iesweb.com/edu/>

